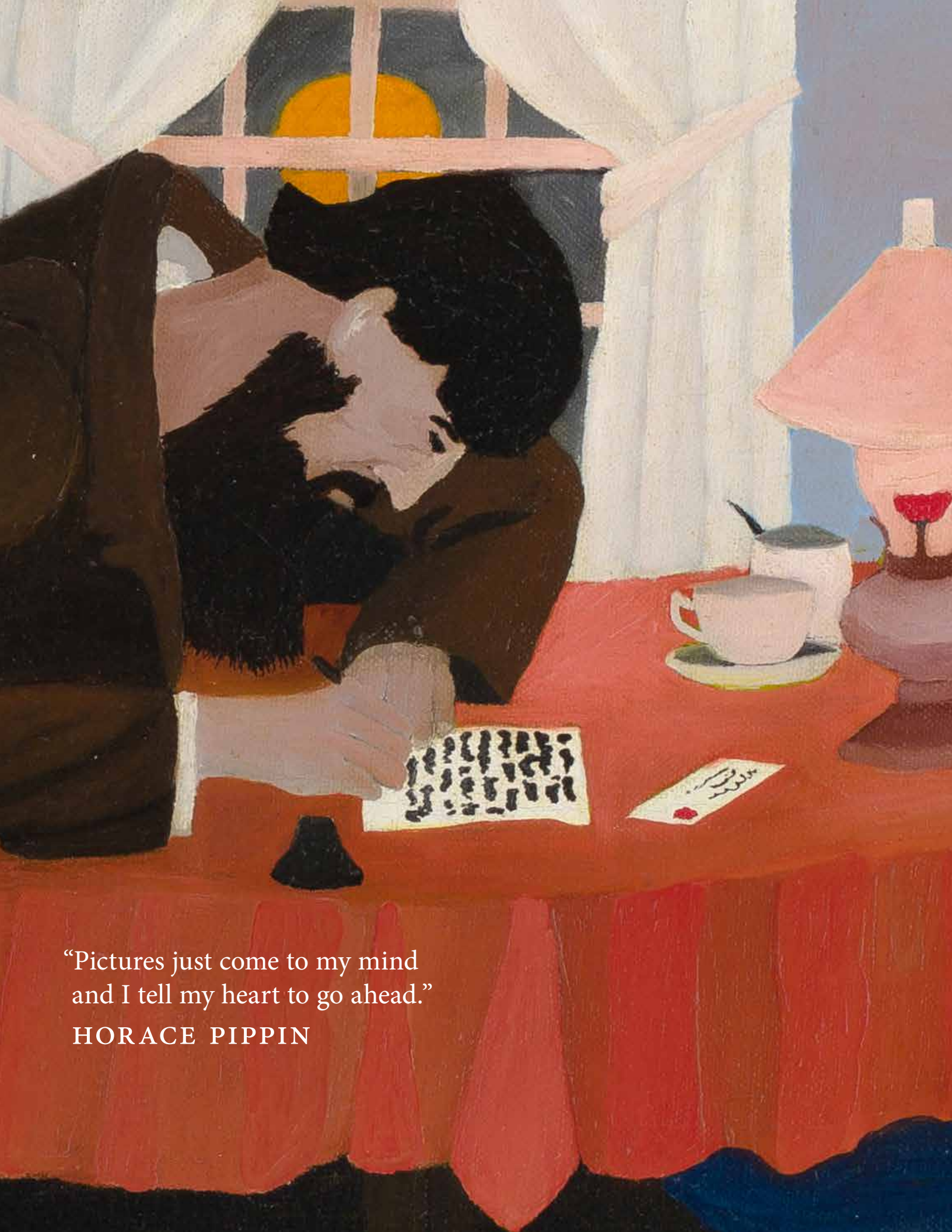




Jonathan Boos

EXHIBITING AT  
The Art Show 2024





“Pictures just come to my mind  
and I tell my heart to go ahead.”

HORACE PIPPIN

# Horace Pippin

(American, 1888–1946)

*Amish Letter Writer*, 1940

Oil on canvas

12 × 20 inches

Signed and dated lower right





# William H. Johnson

(American, 1901–1970)

## *Blind Singer*, 1940

Silkscreen on paper

17½ × 11½ inches

Signed lower right

## *Breakdown*, c. 1940–41

Silkscreen on paper

14 × 18 inches

Inscribed on the upper center

verso-Breakdown / FO-(1)

593 / William H. Johnson





# Beauford Delaney

(American, 1901–1979)

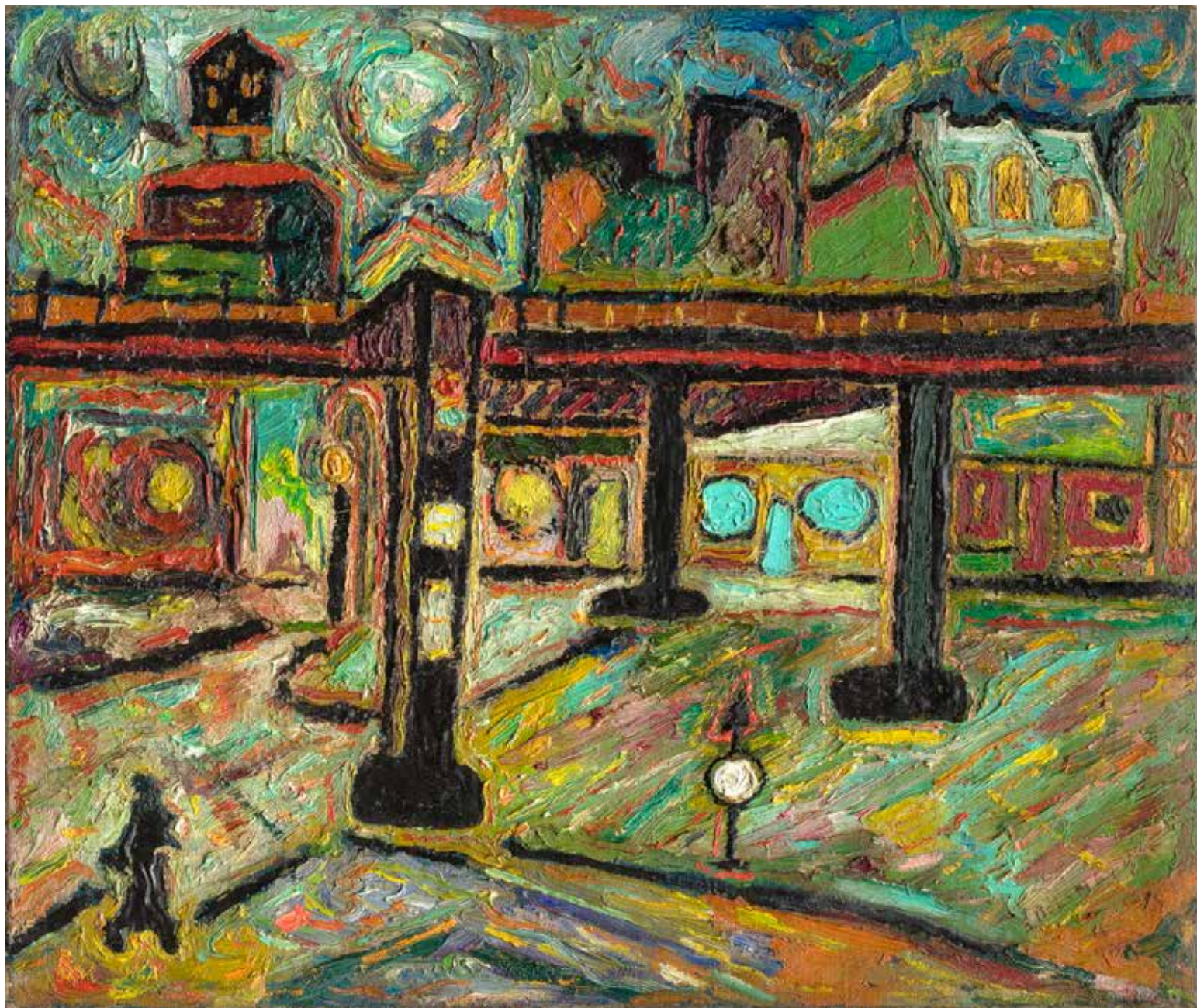
*Untitled (Greenwich  
Village, New York)*, c. 1945–46

Oil on canvas

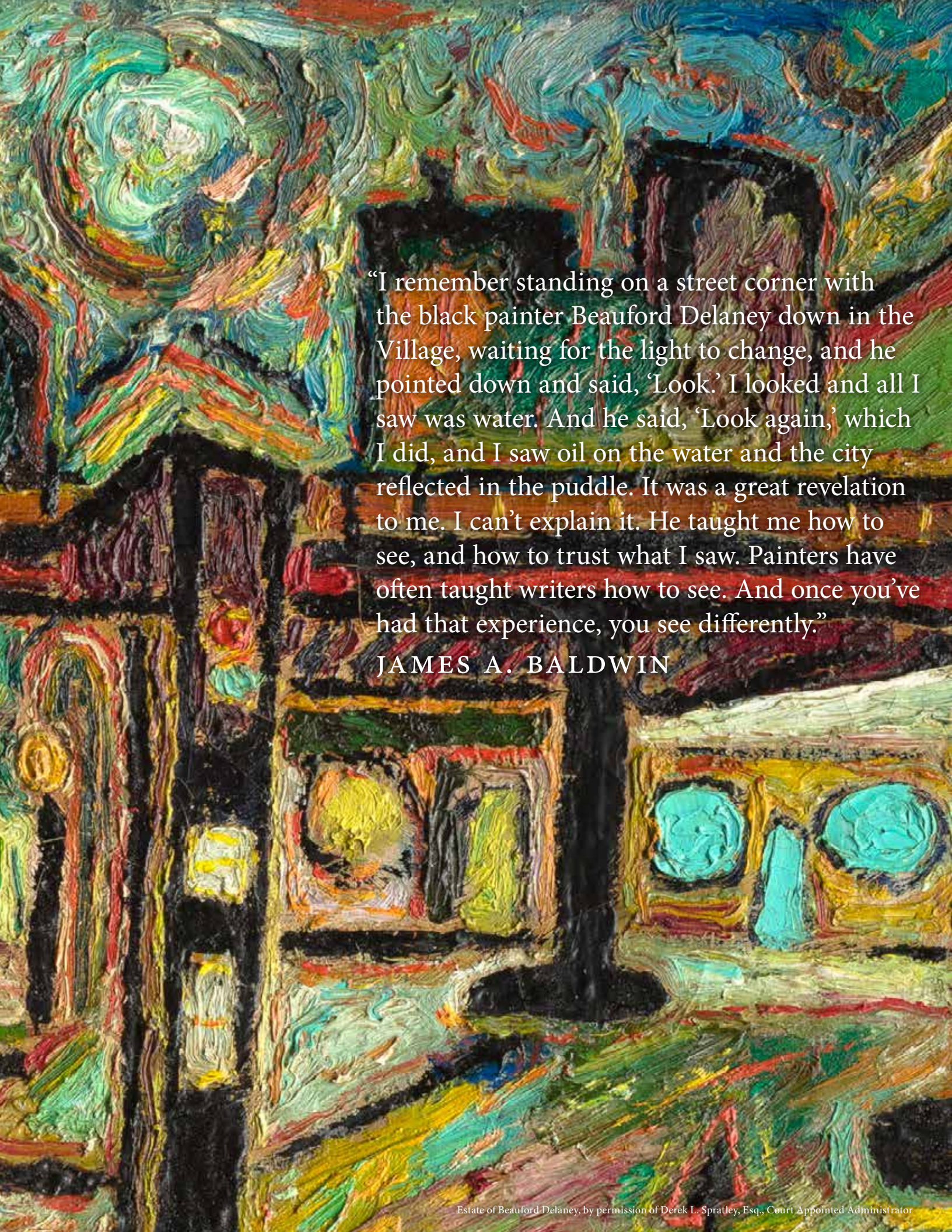
18 × 21½ inches

Signed lower right

Signed and inscribed on the verso







“I remember standing on a street corner with the black painter Beauford Delaney down in the Village, waiting for the light to change, and he pointed down and said, ‘Look.’ I looked and all I saw was water. And he said, ‘Look again,’ which I did, and I saw oil on the water and the city reflected in the puddle. It was a great revelation to me. I can’t explain it. He taught me how to see, and how to trust what I saw. Painters have often taught writers how to see. And once you’ve had that experience, you see differently.”

JAMES A. BALDWIN



# Charles White

(American, 1918–1979)

*Woman in Blue*, 1965–66

Oil on canvas

50 × 34 inches

Signed lower right



# Hughie Lee-Smith

(American, 1915–1999)

*Untitled*, 1951

Oil on masonite

18 × 24 inches

Signed and dated upper right









# Richmond Barthé

(American, 1901–1989)

*Stevedore*, conceived 1937; cast 1986

Bronze

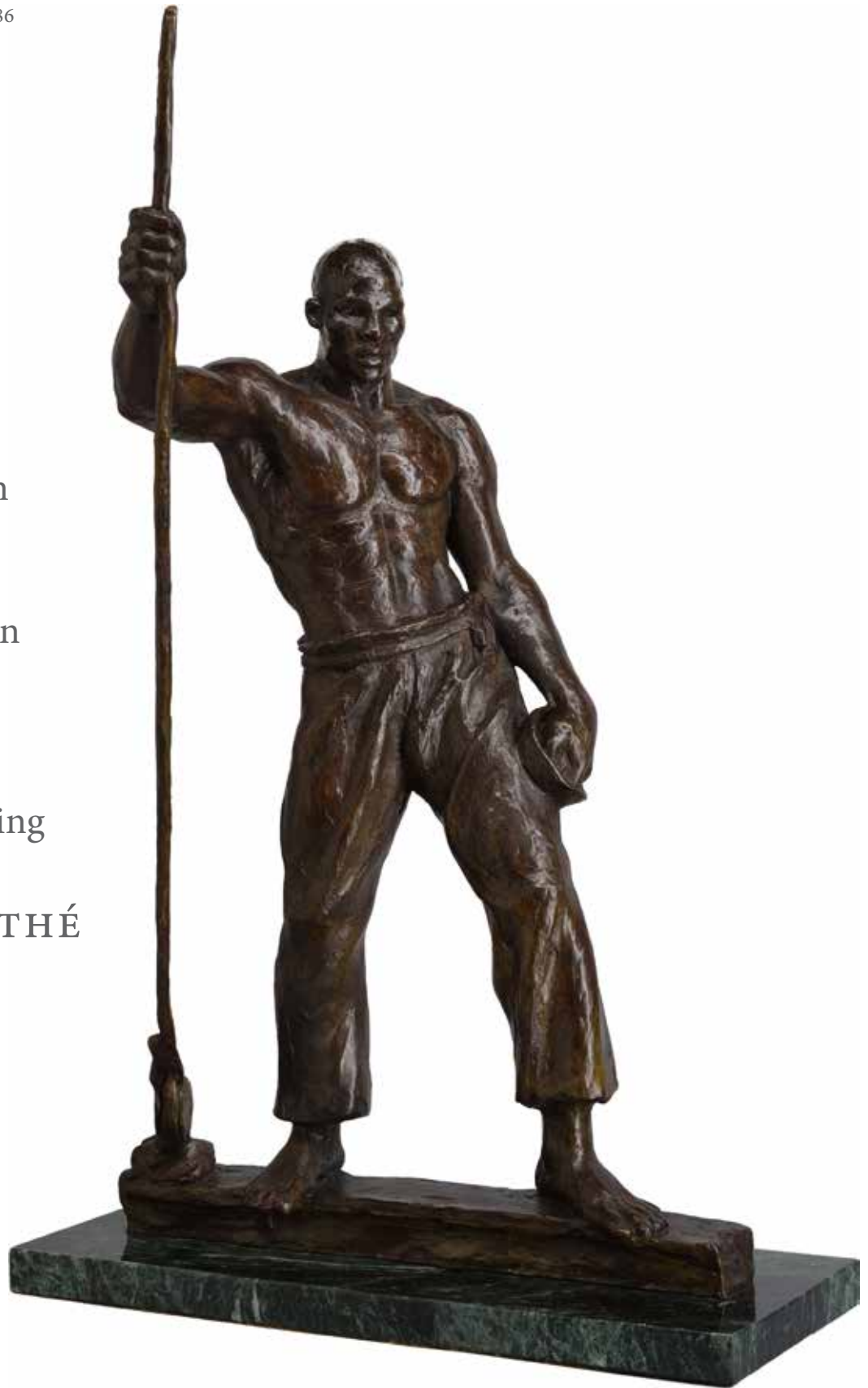
29¼ × 16⅞ × 15 inches

Signed Barthé '37 and

stamped © '86 4/8 along the base

“All my life I have been interested in trying to capture the spiritual quality I see and feel in people, and I feel that the human figure as God made it, is the best means of expressing this spirit in man.”

**RICHMOND BARTHÉ**





# Marion Perkins

(American, 1908–1961)

*Head of a Woman*, c. 1945

Carved marble

18½ × 5 × 5 inches

Signed on the top





# Max Weber

(American, 1881–1961)

*Figures in a Landscape*, 1911

Watercolor and pencil on paper

24 × 19 inches

Signed and dated lower right





# Albert Bloch

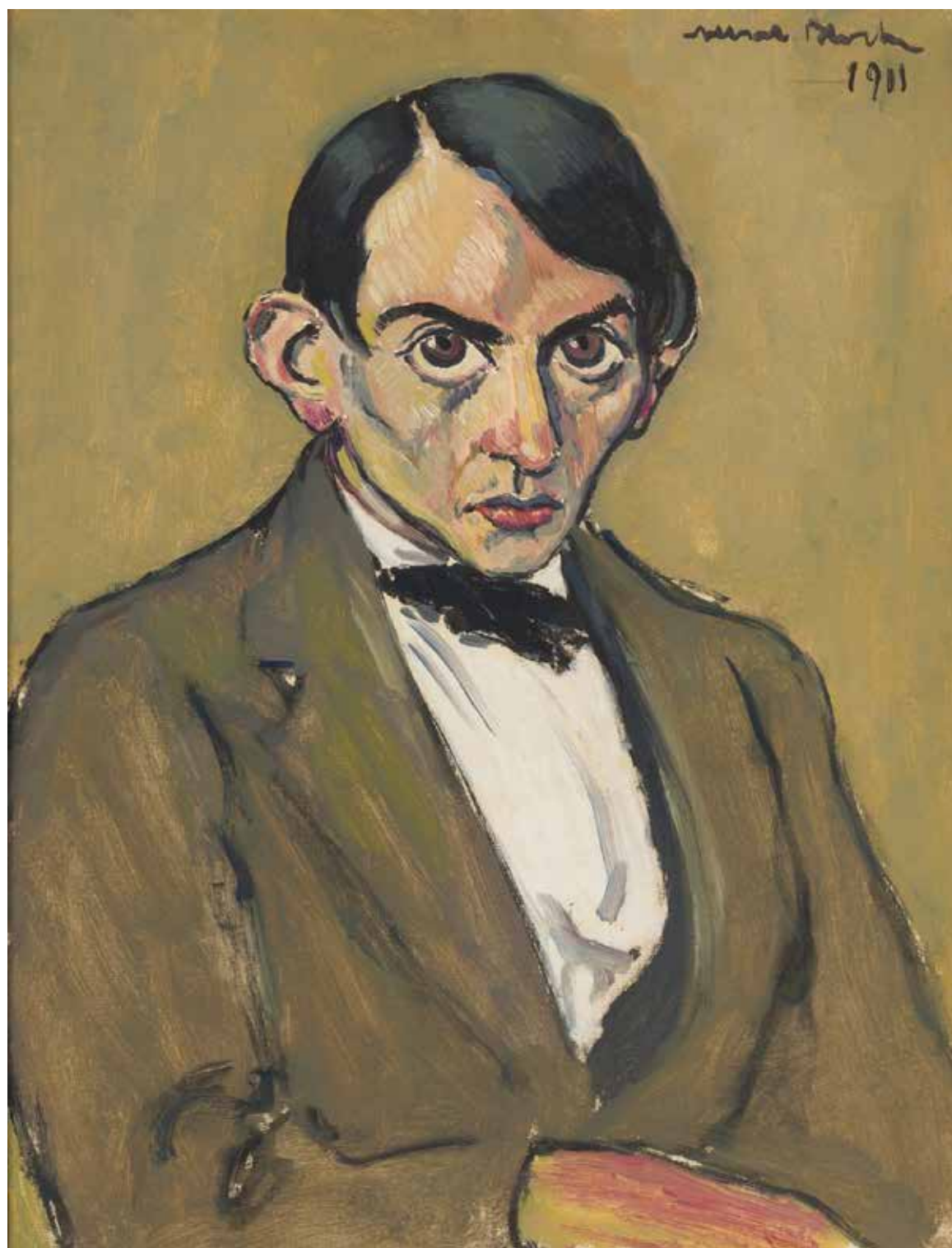
(American, 1882–1961)

*Portrait of a Man*, 1911

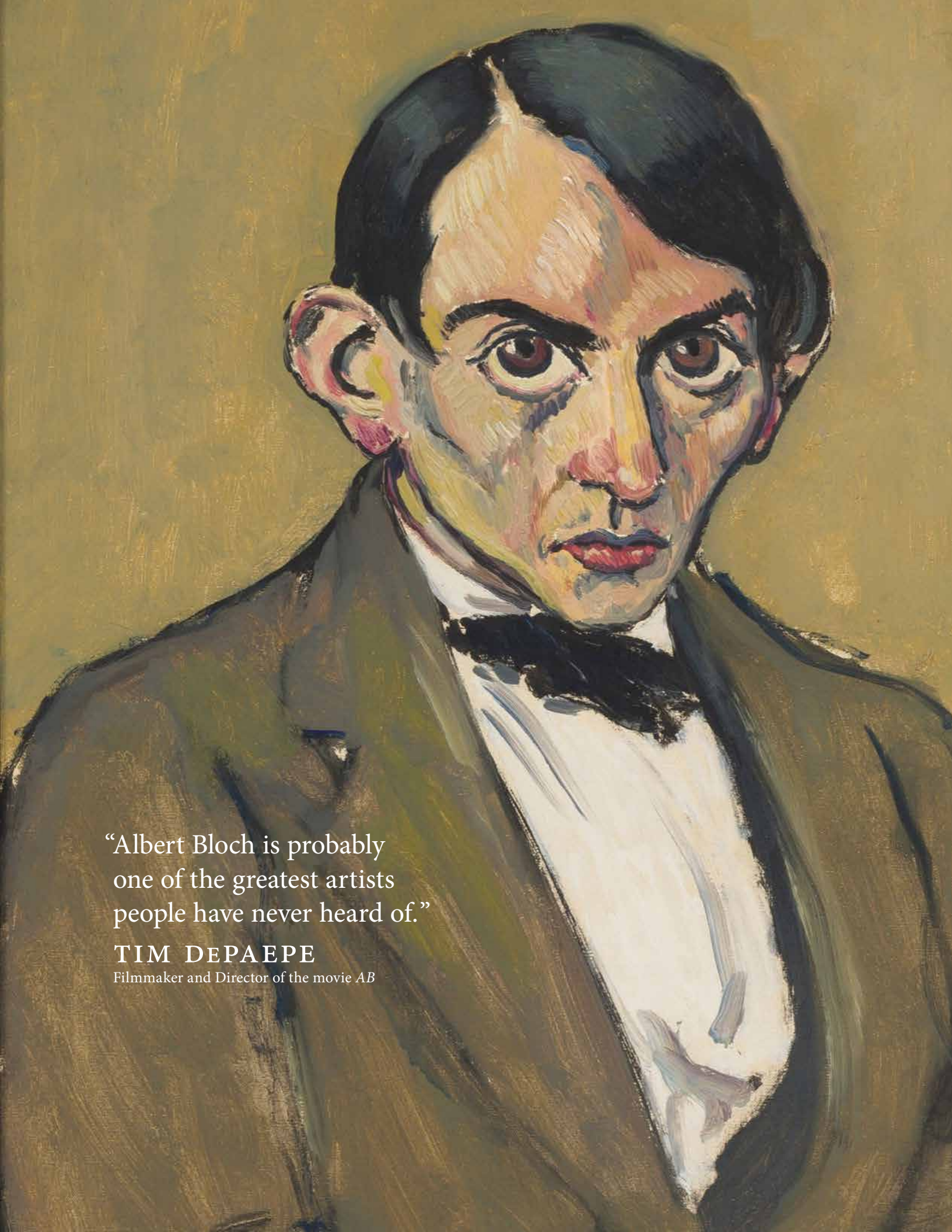
Oil on canvas

26 × 19¾ inches

Signed and dated upper right







“Albert Bloch is probably  
one of the greatest artists  
people have never heard of.”

**TIM DEPAEPE**

Filmmaker and Director of the movie *AB*



# Charles Demuth

(American, 1883–1935)

*Negro Dancer Girl*, 1916

Watercolor and pencil on paper

13 × 7¾ inches

Signed on the verso





# Marsden Hartley

(American, 1877–1943)

*Red Flowers on Pink Ground*, 1943

Oil on masonite

9¾ × 24 inches

Signed and dated lower right





“My work is getting stronger and stronger and more intense all the time . . . I have such a rush of new energy and notions coming into my head, over my horizon like chariots of fire that all I want is freedom to step aside and execute them.”

MARSDEN HARTLEY





# George L. K. Morris

(American, 1905–1975)

*Composition*, 1941

Oil on canvas

24 × 20 inches

Signed, titled and dated on the verso





# Charles Sheeler

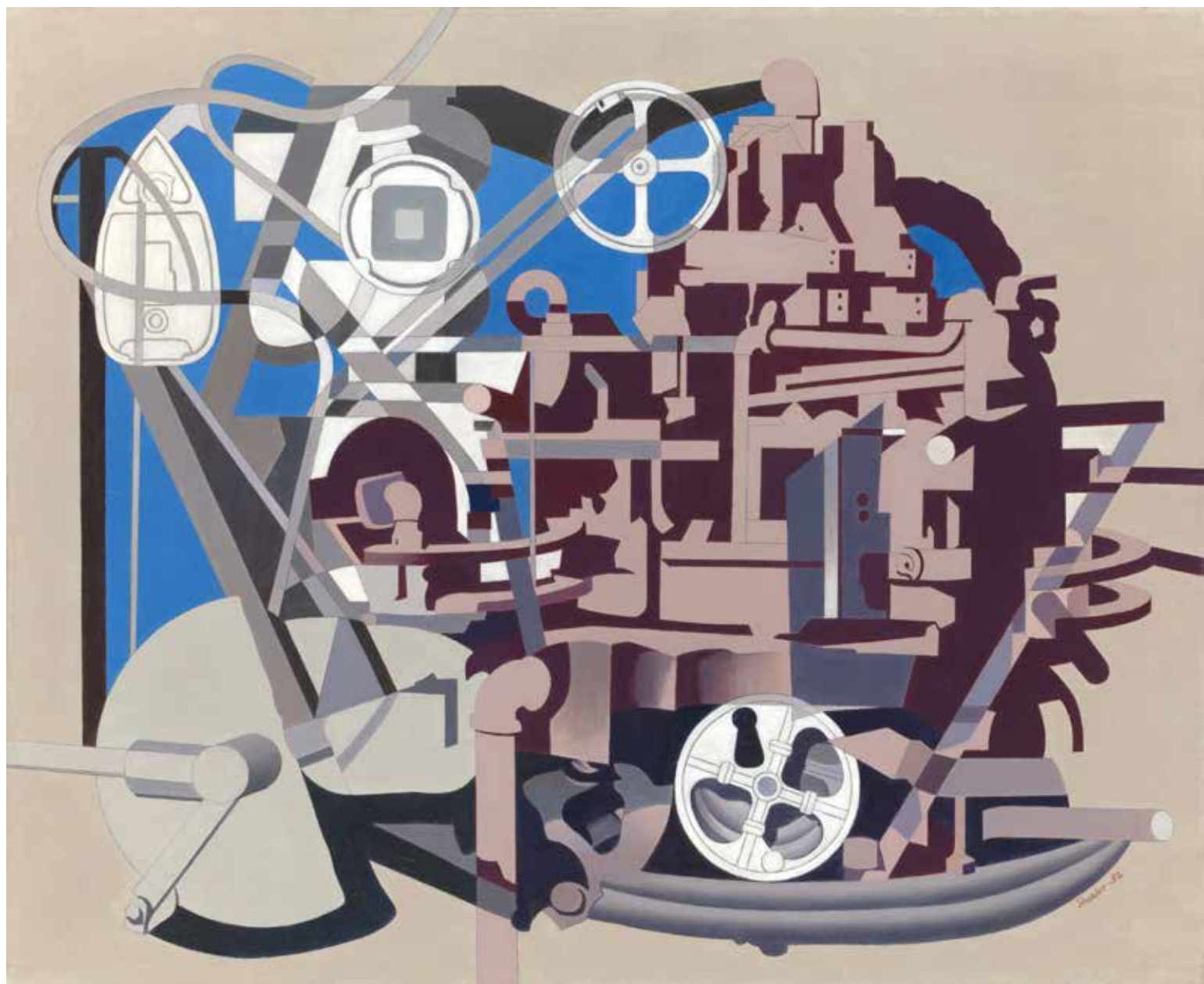
(American, 1883–1965)

*Meta-Mold*, 1952

Oil on canvas

25¼ × 31 inches

Signed and dated lower right







“Photography is nature seen  
from the eyes outward,  
painting from the eyes inward.”

CHARLES SHEELER



The Art Show  
AT THE PARK AVENUE ARMORY  
October 29–November 2

Please contact the gallery for  
further information and pricing.

[jb@jonathanboos.com](mailto:jb@jonathanboos.com)  
212 535 5096

 Jonathan Boos